



# FUNCTIONAL SKILLS MATHS & ENGLISH

## LEVEL 1 & 2 EXAMS

### Functional Skills Maths & English Exams

**Exam Centre** is a specialist provider of **Functional Skills** qualifications in **Maths** and **English**, offering **City & Guilds** examinations that are fully regulated and **approved by Ofqual**.

Our Functional Skills qualifications are recognised as equivalent to **GCSE grade 4+ (grade C and above)**, providing learners with a credible and nationally accepted route into further education, apprenticeships, and employment.

[BOOK NOW](#)

[LEARN MORE](#)

### Online Courses

- ➔ Functional Skills Maths
- ➔ Functional Skills English

### Exams

- ➔ Functional Skills **Maths** Level 1 or 2 Exams **in London**
- ➔ Functional Skills **English** Level 1 or 2 Exam **in London**
- ➔ **Online** Functional Skills **Maths** Level 1 or 2 Exams
- ➔ **Online** Functional Skills **English** Level 1 or 2 Exam

***Disclaimer:** The content of this document belongs to the respective awarding body and is shared for educational purposes only, Exam Centre does not claim ownership of this material.*



[www.examcentre.co.uk](http://www.examcentre.co.uk)



362 Essex Road  
Islington N1 3PD



020 7288 9020

**BOOK YOUR FUNCTIONAL SKILLS EXAM NOW!**

# Pearson Edexcel Functional Skills – Level 2

## \*\*\*Past Paper 5\*\*\*

Time: 75 minutes

Paper Reference **PENR2/S05**

### English

#### Component 2: Reading Text Booklet

**Do not return this Text Booklet with the Question and Answer Booklet.**

#### Instructions

- You should write your answers in the Question and Answer Booklet.
- You must **not** write any responses to questions in this Text Booklet.

#### Information

- This Text Booklet contains the three texts required for the Level 2 Component 2: Reading exam.
- This Text Booklet must be securely destroyed by the centre immediately after the exam has been completed.

#### Advice

- Read each text before you answer the questions.

Turn over ►

P67322A

©2020 Pearson Education Ltd.

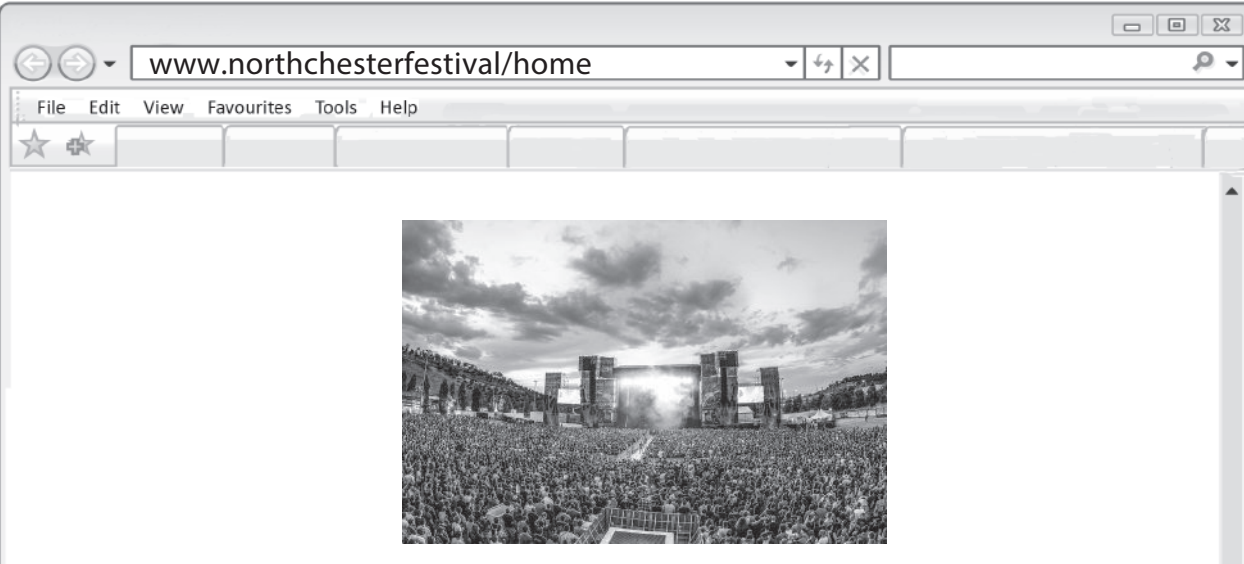
1/1



  
Pearson

## Text A

### Advert



**Paragraph 1**

This year's Northchester Music Festival will be bigger and better than ever before! The multi-award winning festival takes place on a 100 acre site, in beautiful Northchester Country Park. The backdrop to the festival is the stunning Penly Hills. There are great transport links by rail via Northchester Central and by coach via Penly Coach Station.

**Paragraph 2**

There will be a massive 200 singers, DJs and bands performing across six stages. We can promise you some of the biggest names in music, as well as the coolest new bands on the Emerging Acts stage. There will also be a comedy tent and lots of free events for festival goers.

**Paragraph 3**

All tickets include free camping if you enjoy sleeping under the stars. If you crave a little more luxury then other options include pods, cabins and yurts and even our fabulous onsite hotel. If you fancy one of these options then book early – they sell out every year. There are family areas and quiet fields if you'd like some peace and quiet.

**Paragraph 4**

If you get peckish during the festival then don't worry – there are no soggy burgers here! Every year there are independent traders selling a dizzying variety of food at reasonable prices. Whatever your diet, we've got you covered and we monitor prices to make sure that the food is as affordable as it's tasty.

**Paragraph 5**

If you're planning to attend the festival then be sure to download Northchester Festival App. You'll be able to follow all of the latest festival news and there's a brilliant schedule function to give you a handy reminder of all the acts you want to see. You'll be sure to see your favourite bands playing the music you love!

## Text B

### Article

#### **Festival-goers will spend £1.2bn on food, clothes and merchandise this summer**

by

**Emma Elsworthy**

Festival-goers will shell out a whopping £1.2 billion this summer on food, clothes and merchandise. Researchers who polled 2,000 adults found 36% plan to go to some sort of live entertainment event this year. And the stats show the average adult will part with £67 a day, as they browse stalls and enjoy games, rides and other festival experiences.

Food is the biggest daily spend at a festival, with the average music fan forking out £46 to keep themselves fed. However, the study<sup>1</sup> found food preferences have changed – and the days of chips and burgers are long gone. Festival-goers are now tucking into thali (16%), fish curry (15%) and kimchee (14%).

Making memories is increasingly important to people when deciding how to spend their money, with many keen to take away something extra from their festival

experience. It emerged eight in 10 festival-lovers will splash out on unique products that can't be found elsewhere.

Four in 10 even prefer to shop at live entertainment events rather than online or on the high street – with a third considering these events better places to uncover new trends. 41% said they feel more connected to the products they buy at a festival.

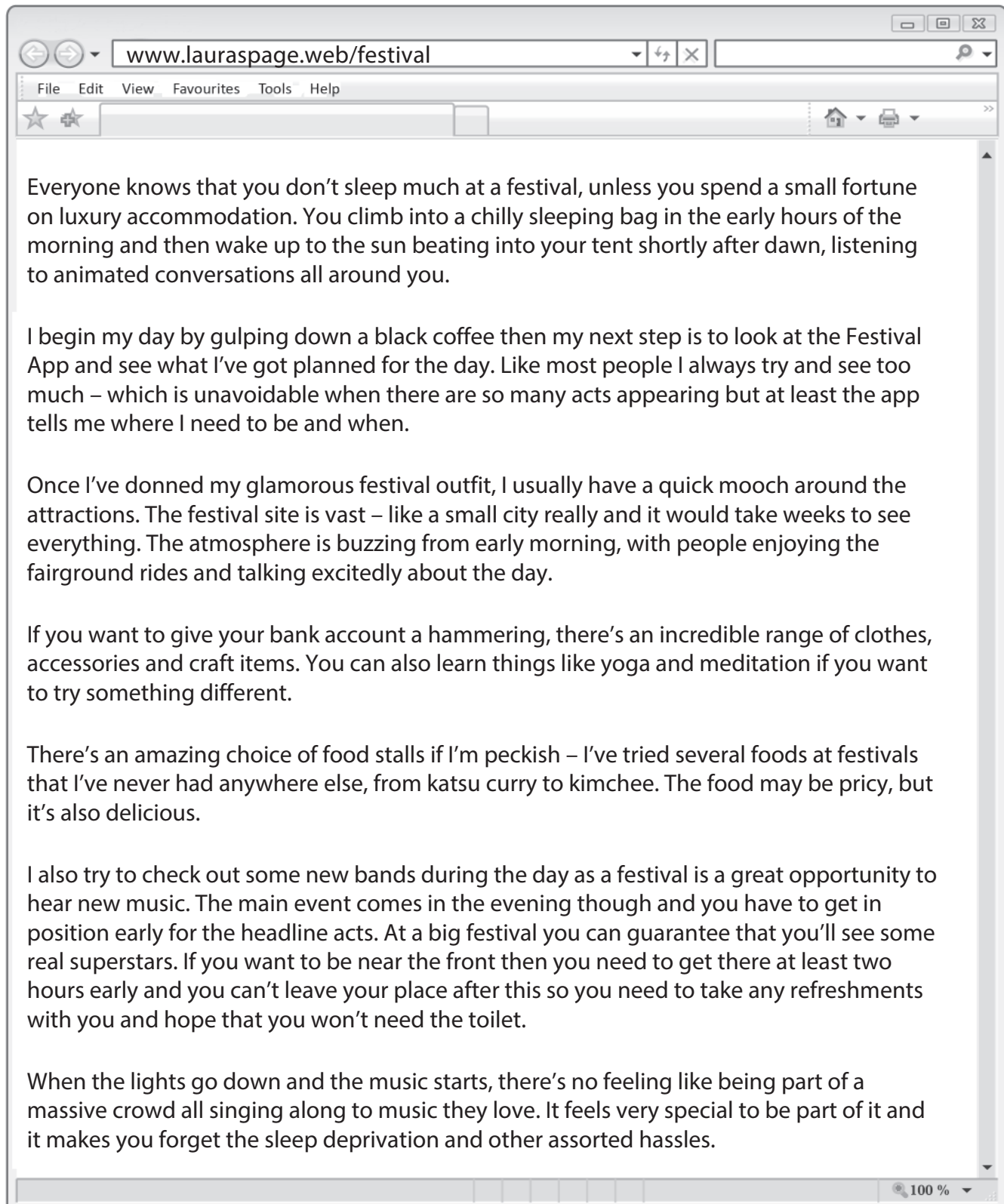
The study also polled 200 companies who sell goods at festivals. Half the companies said that they try out products which they'll then later roll out online or in store. Of those who have used festivals as a testing ground, four in five companies do so because they consider attendees to be fairly open-minded, and 83% like the idea of receiving direct feedback. Some companies polled believed that their sales will continue to rise in the future, but others were less confident.

<sup>1</sup>Commissioned by Barclaycard

Source: adapted from (<https://www.mirror.co.uk/news/uk-news/festival-goers-spend-12bn-food-17370441>)

## Text C

### Blog





# Ready to Take Your Functional Skills Exam?

Exam Centre is offering Ofqual-regulated, City & Guilds approved Functional Skills Maths and English exams; the nationally recognised GCSE grade 4+ (grade C) equivalent. Whether you're sitting for the first time or resitting, we offer flexible exam bookings online and at our centre all year round.

 **Book Now!**

## Book Your Exams & Courses

Qualification	Private Course	Online Exam	Exam in London
Functional Skills Maths Level 1 & 2	<a href="#">Enrol on Course</a>	<a href="#">Book Online Exam</a>	<a href="#">Book London Exam</a>
Functional Skills English Level 1 & 2	<a href="#">Enrol on Course</a>	<a href="#">Book Online Exam</a>	<a href="#">Book London Exam</a>

## Why Exam Centre?

- Ofqual-regulated & fully accredited
- City & Guilds approved awarding body exams
- Accepted by employers, colleges, universities & apprenticeship providers
- Flexible online and in-person options across the UK
- Recognised GCSE Maths & English equivalent (grade 4+ / grade C)

CALL US FOR MORE INFORMATION:

 **020 7288 9020**

 [booking@examcentre.co.uk](mailto:booking@examcentre.co.uk)

 [www.examcentre.co.uk](http://www.examcentre.co.uk)