



# FUNCTIONAL SKILLS MATHS & ENGLISH

## LEVEL 1 & 2 EXAMS

### Functional Skills Maths & English Exams

**Exam Centre** is a specialist provider of **Functional Skills** qualifications in **Maths** and **English**, offering **City & Guilds** examinations that are fully regulated and **approved by Ofqual**.

Our Functional Skills qualifications are recognised as equivalent to **GCSE grade 4+ (grade C and above)**, providing learners with a credible and nationally accepted route into further education, apprenticeships, and employment.

[BOOK NOW](#)

[LEARN MORE](#)

### Online Courses

- ➔ Functional Skills Maths
- ➔ Functional Skills English

### Exams

- ➔ Functional Skills **Maths** Level 1 or 2 Exams **in London**
- ➔ Functional Skills **English** Level 1 or 2 Exam **in London**
- ➔ **Online** Functional Skills **Maths** Level 1 or 2 Exams
- ➔ **Online** Functional Skills **English** Level 1 or 2 Exam

***Disclaimer:** The content of this document belongs to the respective awarding body and is shared for educational purposes only, Exam Centre does not claim ownership of this material.*



[www.examcentre.co.uk](http://www.examcentre.co.uk)



362 Essex Road  
Islington N1 3PD



020 7288 9020

**BOOK YOUR FUNCTIONAL SKILLS EXAM NOW!**



Please write clearly in block capitals.

Centre number

--	--	--	--	--

Candidate number

--	--	--	--

Surname

---

Forename(s)

---

Candidate signature

---

I declare this is my own work.

# Functional Skills Level 2

## ENGLISH

### Paper 2 Writing

Friday 4 November 2022

Afternoon

Time allowed: 1 hour

#### Materials

- You will need no other materials.
- You **must not** have access to a dictionary or any other spelling or grammar aid.

#### Instructions

- Use black ink or black ball-point pen.
- Fill in the boxes at the top of this page.
- Answer **both** questions.
- You must answer the questions in the spaces provided.
- Do not write outside the box around each page or on blank pages.
- If you need extra space for your answer(s), use the lined pages at the end of this book. Write the question number against your answer(s).
- Do all rough work in this answer book.
- Cross through any work you do not want to be marked.

#### Information

- The marks for questions are shown in brackets.
- The maximum mark for this paper is 30.
- You are reminded of the need for good English and clear presentation in your answers.

#### Advice

You are advised to spend 20 minutes on **Question 1** and 40 minutes on **Question 2**.

For Examiner's Use	
Question	Mark
1	
2	
<b>TOTAL</b>	



N 0 V 2 2 8 7 2 5 W 0 1

IB/G/Nov22/E2

**8725W**  
**QAN 603/4285/7**

Answer **both** questions.

Answer the questions in the spaces provided.

**0 1**

You have received the following flyer through your letterbox.

**Community Transport Research Group**  
**comtrgroup.co.uk**

We're a government-funded group looking at young people's use of public transport. We're trying to get as much information as possible about the real experiences of real young people.

So, provide us with a brief report about one bad experience and one good experience. It's as simple as that.

We'll send you some free travel vouchers when you email your report to us at [email@comtrgroup.co.uk](mailto:email@comtrgroup.co.uk).



You want to email your report to [comtrgroup.co.uk](http://comtrgroup.co.uk).

Write a brief report about **one** bad and **one** good experience with public transport. Your report should be approximately **150 to 200** words in total.

Remember to:

- plan your answer
- use correct spelling, punctuation and grammar
- write clearly and effectively.

**[6 marks]**  
**[+ 3 marks for SPaG]**

Plan your answer here:

---



---



---



---



---



---



---



---



---



---





Do not write  
outside the  
box

A large rectangular box containing 25 horizontal lines for writing. The box has a double-line border and a vertical scrollbar on the right side.



**Turn over for the next question**

*Do not write  
outside the  
box*

**DO NOT WRITE ON THIS PAGE  
ANSWER IN THE SPACES PROVIDED**



0 2

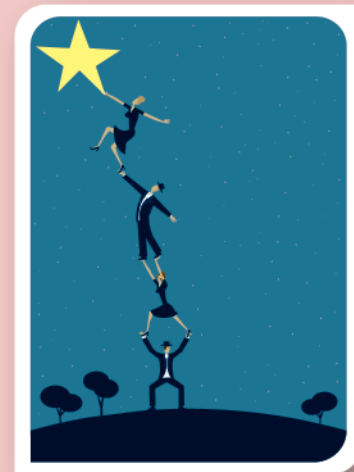
You have found the following on a news website:

Facing A Challenge

We're looking for articles that will tell us something about facing challenges in our lives. Now this can be anything, from the brutal challenge of waking up in the morning to the challenge of addressing climate change. There are sporting challenges, challenges to our beliefs, challenges in our cities...

Write an interesting article on how you faced a challenge, whether alone or with others. If your article is published, you could win a 3-day trip to a city of your choice.

Submit your article online at: [challengeitUK.com](http://challengeitUK.com)



Write an article about facing a challenge for the challengeitUK competition.

Remember to:

- plan your answer
- use correct spelling, punctuation and grammar
- write accurately in sentences and paragraphs.

[12 marks]  
[+ 9 marks for SPaG]

Plan your answer here:

---



---



---



---



---



---



---



---



---



---







**There are no questions printed on this page**

*Do not write  
outside the  
box*

**DO NOT WRITE ON THIS PAGE  
ANSWER IN THE SPACES PROVIDED**











# Ready to Take Your Functional Skills Exam?

Exam Centre is offering Ofqual-regulated, City & Guilds approved Functional Skills Maths and English exams; the nationally recognised GCSE grade 4+ (grade C) equivalent. Whether you're sitting for the first time or resitting, we offer flexible exam bookings online and at our centre all year round.

 **Book Now!**

## Book Your Exams & Courses

Qualification	Private Course	Online Exam	Exam in London
Functional Skills Maths Level 1 & 2	<a href="#">Enrol on Course</a>	<a href="#">Book Online Exam</a>	<a href="#">Book London Exam</a>
Functional Skills English Level 1 & 2	<a href="#">Enrol on Course</a>	<a href="#">Book Online Exam</a>	<a href="#">Book London Exam</a>

## Why Exam Centre?

- Ofqual-regulated & fully accredited
- City & Guilds approved awarding body exams
- Accepted by employers, colleges, universities & apprenticeship providers
- Flexible online and in-person options across the UK
- Recognised GCSE Maths & English equivalent (grade 4+ / grade C)

CALL US FOR MORE INFORMATION:

 **020 7288 9020**

 [booking@examcentre.co.uk](mailto:booking@examcentre.co.uk)

 [www.examcentre.co.uk](http://www.examcentre.co.uk)